

COLLEGE OF AGRICULTURAL, HUMAN, AND NATURAL RESOURCE SCIENCES

[HOME](#)

[ABOUT](#)

[ACADEMICS](#)

[RESEARCH](#)

[EXTENSION](#)

[ALUMNI & FRIENDS](#)

[FACULTY & STAFF RESOURCES](#)

Green Times – November 2015

Posted by cahnrs.webteam | November 4, 2015

Events

2015 Tilth Producers Conference

Spokane Nov 13–15. [Register.](#)

Read about [WSU expertise at the conference.](#)

WSU Fruit School on apple, pear horticulture

Wenatchee Nov 18–19. [Register.](#)

Cascadia Grains Conference

Save the date! January 9, 2016. [Information.](#)

8th Annual Organic Seed Growers Conference

February 4–6, 2016, Corvallis, OR.

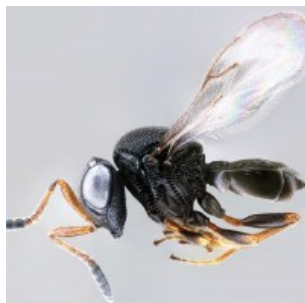
[Information.](#)

NEW publication

[Trends and economics of Washington State organic vegetable production](#)

Sweet corn, green peas, snap beans, potatoes, onions, and carrots account for more than 80% of the organic vegetable acreage and 60% of the value in the state. [Read more.](#)

D. Granatstein, E. Kirby, and M. Brady. 2015. WSU Extension Fact Sheet EM097E. 29 pages.



New ‘Alien’ wasp discovered in Washington state

The discovery in Washington state of a parasitic wasp that kills its host like a scene from the “Alien” sci-fi movie has entomologists cheering from the west coast to the east.

[Read More](#)



Weighing the benefits, risks of wild birds on organic farms

Washington State University researchers will help organic growers protect human health by assessing the risks and benefits of wild birds on organic farms. Researchers received nearly \$2 million from the USDA Organic Research and Extension Initiative to conduct the study.

[Read More](#)



Understanding what to expect from climate change

In a [Perspectives on Sustainability](#) blog post CSANR’s [Sonia Hall](#) explains how climate change is like heart disease.

“Experts can tell you what the risk factors are [of heart disease]... But if you had a heart attack, could they say it

was specifically because of your diet? Or your blood pressure? That’s much harder to do.”

[Read More](#)



[Research for specialty crops boosted by \\$1.7 million](#)

More than \$1.7 million was awarded to Washington State University for specialty crop research including berries, potatoes, grapes, tree fruit, onions, carrots and Christmas trees.

[Read More](#)



[The Bread Lab plants wheat, barley at the Governor’s Mansion](#)

In a [Perspectives on Sustainability](#) blog post CSANR’s [Sonia Hall](#) explains how climate change is like heart disease.

“Experts can tell you what the risk factors are [of heart disease]... But if you had a heart attack, could they say it was specifically because of your diet? Or your blood pressure? That’s much harder to do.”

[Read More](#)

[CONTACT](#)

[DIRECTORY](#)

[LOCATIONS](#)

ABOUT

- [Executive Leadership](#)
- [CAHNRS Administration](#)
- [Locations](#)
- [Departments](#)
- [Latest News](#)
- [Learn About CAHNRS](#) ▶

ACADEMICS

- [Degrees](#)
- [Graduate Studies](#)
- [Scholarships](#)
- [Internships](#)
- [Careers & Clubs](#)
- [Visit Academics](#) ▶

RESEARCH

- [Centers & Facilities](#)
- [Grant Resources](#)
- [Intellectual Property](#)
- [Weekly Published Research](#)
- [Safety](#)
- [Visit Research](#) ▶

EXTENSION

- [About Extension Programs](#)
- [Publications](#)
- [Locations](#)
- [Impacts](#)
- [Visit Extension](#) ▶

ALUMNI

- [Where to Give](#)
- [Ways to Give](#)
- [Scholarship](#)
- [Donor Profiles](#)
- [ReConnect](#)
- [Magazine](#)
- [Connections](#)
- [Magazine](#)
- [Archive](#)
- [Visit Alumni](#) ▶

FACULTY & STAFF

- [Quick Links](#)
- [Business Services](#)
- [Budget & Finance Unit](#)
- [Civil Rights](#)
- [Compliance](#)
- [Strategic Planning](#)
- [Visit Faculty & Staff](#)
- ▶