

Supporting Information for:

Anisotropic Buckypaper through Shear-induced Mechanical Alignment of Carbon Nanotubes in Water

By *Danny Vennerberg*^a and *Michael R. Kessler*^{a,b,1}

^a *Dept. of Materials Science and Engineering, Iowa State University, Ames, IA, United States*

^b *School of Mechanical and Materials Engineering, Washington State University, Pullman, WA*

SEM images of the backside (side adjacent to the filter paper) of the buckypaper were taken to compare with those from the front side (side adjacent to the cylinder gap). Representative micrographs obtained from samples subjected to various shear rates are given in Fig. S1.

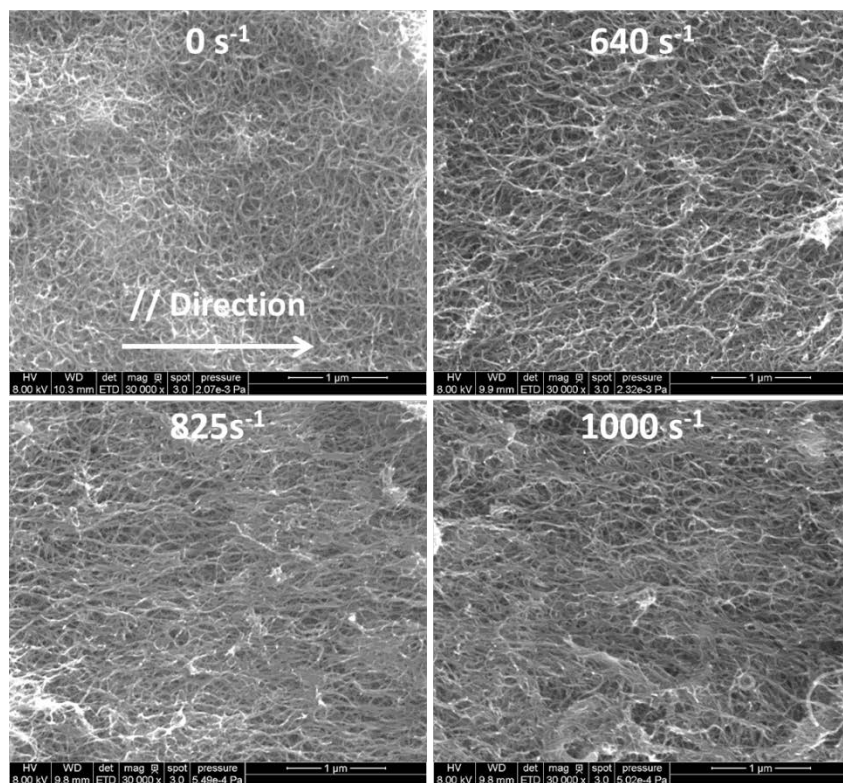


Figure S1. Scanning electron micrographs of the backside of BP formed at shear rates of 0 s^{-1} , 640 s^{-1} , 825 s^{-1} , and 1000 s^{-1} .

¹Corresponding author. E-mail address: *MichaelR.Kessler@wsu.edu* (M.R. Kessler).